
WARNING: This manual contains information on limitations regarding product use and function and information on the limitations as to liability of the manufacturer. The entire manual should be carefully read.

PC1616/PC1832/PC1864 User Manual

PowerSeries™
SECURITY SYSTEM

v4.7

Table of Contents

About Your Security System	1
PowerSeries System Keypads	2
Keypad Display Symbols	3
PK5500/RFK5500/RFK5564 Language Selection	4
Arming & Disarming the System	4
Arming (Turning On/Setting)	4
Away Arming (Turned On/Set)	4
Quick Exit	4
Bell/Siren Sounds After Away Arming	4
Disarming (Turning Off /Unsetting)	4
Stay Arming (Partially Turning On / Part Setting)	5
Night Arming	5
No-Entry Arming	5
Silent Exit Delay	5
Remote Arming and Disarming	5
Emergency Keys	5
When Alarm Sounds	6
Time & Date Programming	6
Bypassing Zones	6
Trouble Conditions	8
Trouble Menu Acknowledgement	8
Alarm Memory	8
Door Chime (Entry/Exit Beeps)	8
Access Code Programming	8
Access Codes	9
User Code Attributes	9
Bell Squawk Attribute	10
Partition Assignment Mask	10
Erasing an Access Code	10
User Function Commands	10
Changing Brightness/Contrast	11
Changing the Buzzer Level	12
Viewing the Event Buffer from PK5500/RFK5500/RFK5564 Keypads	12
PK5500/RFK5500/RFK5564 Global Status Screen	12
Sensor Reset	12
Testing Your System	12
Reference Sheets	14
Guidelines for Locating Smoke Detectors and CO Detectors	16
Household Fire Safety Audit	18
Fire Escape Planning	18
Keypad Quick Guide	19

IMPORTANT SAFETY INSTRUCTIONS

To reduce the risk of fire, electric shock and/or injury, observe the following:

- Do not spill any type of liquid on the equipment.
- Do not attempt to service this product yourself. Opening or removing the cover may expose you to dangerous voltage or other risk. Refer servicing to qualified service personnel. Never open the device yourself.
- Do not touch the equipment and its connected cables during an electrical storm; there may be a risk of electric shock.
- Do not use the Alarm System to report a gas leak if the system is near a leak.

REGULAR MAINTENANCE AND TROUBLESHOOTING

Keep your Alarm Controller in optimal condition by following all the instructions that are included within this manual and/or marked on the product.

CLEANING

- Clean the units by wiping with a damp cloth only.
- Do not use abrasives, thinners, solvents or aerosol cleaners (spray polish) that may enter through holes in the Alarm Controller and cause damage.
- Do not use any water or any other liquid.
- Do not wipe the front cover with alcohol.

TROUBLESHOOTING

Occasionally, you may have a problem with your Alarm Controller or telephone line. If this happens, your Alarm Controller will identify the problem and displays an error message. Refer to the provided list when you see an error message on the display. If additional help is required, contact your distributor for service.

WARNING: This equipment, PC1616/1832/1864 Alarm System shall be installed and used within an environment that provides the pollution degree max 2 and over-voltages category II non-hazardous locations, indoor only. It is designed to be installed, serviced and/or repaired by service persons only [service person is defined as a person having the appropriate technical training and experience necessary to be aware of hazards to which that person may be exposed in performing a task and of measures to minimize the risks to that person or other persons]. For EU and Australian markets, the equipment is permanently connected; an accessible disconnect device shall be incorporated into the building installation wiring. For North America the equipment is a direct plug-in connection; the socket outlet shall be installed near the PC1616/1832/1864 and shall be easily accessible. The plug of the direct plug-in transformer serves as the disconnect device.

NOTE: There are no parts replaceable by the end-user within this equipment, except for the keypad batteries.

This publication covers the following models:

- | | | |
|-------------|-----------|-----------|
| • PC1555RKZ | • RFK5508 | • PK5500 |
| • PK5508 | • RFK5516 | • PK5501 |
| • PK5516 | • RFK5501 | • LED5511 |
| • RFK5500 | • RFK5564 | • LCD5511 |

About Your Security System

Your DSC Security System has been designed to provide you with the greatest possible flexibility and convenience. Read this manual carefully and have your installer instruct you on your system's operation and on which features have been implemented in your system. All users of this system should be equally instructed in its use. Fill out the "System Information" page with all of your zone information and access codes and store this manual in a safe place for future reference.

NOTE: The PowerSeries security system includes specific false alarm reduction features and is classified in accordance with ANSI/ SIA CP-01-2000 Control Panel Standard - Features for False Alarm Reduction. Please consult your installer for further information regarding the false alarm reduction features built into your system as all are not covered in this manual.

Carbon Monoxide Detection (must be enabled by your Installer)

This equipment is capable of monitoring carbon monoxide detectors and providing a warning if carbon monoxide is detected. Please read the Family Escape Planning guidelines in this manual and instructions that are available with the carbon monoxide detector.

Fire Detection (must be enabled by your Installer)

This equipment is capable of monitoring fire detection devices such as smoke detectors and providing a warning if a fire condition is detected. Good fire detection depends on having adequate number of detectors placed in appropriate locations. This equipment should be installed in accordance with NFPA 72 (N.F.P.A., Batterymarch Park, Quincy MA 02269). Carefully review the Family Escape Planning guidelines in this manual.

Testing

To insure that your System continues to function as intended, you must test your system weekly. Please refer to the "Testing your System" section in this manual. If your system does not function properly, call your installing company for service.

Monitoring

This system is capable of transmitting alarms, troubles & emergency information to a central station. If you initiate an alarm by mistake, immediately call the central station to prevent an unnecessary response.

NOTE: The monitoring function must be enabled by the installer before it becomes functional.

NOTE: There is a communicator delay of 30 seconds in this control panel. It can be removed, or it can be increased up to 45 seconds, at the option of the end-user by consulting with the installer.

Maintenance

With normal use, the system requires minimum maintenance. Note the following points:

- Do not wash the security equipment with a wet cloth. Light dusting with a slightly moistened cloth should remove normal accumulations of dust.
- Use the system test described in "Testing Your System" to check the battery condition. We recommend, however, that the standby batteries be replaced every 3-5 years.
- For other system devices such as smoke detectors, passive infrared, ultrasonic or microwave motion detectors or glassbreak detectors, consult the manufacturer's literature for testing and maintenance instructions.

General System Operation

Your security system is made up of a DSC control panel, one or more keypads and various sensors and detectors. The control panel will be mounted out of the way in a utility closet or in a basement. The metal cabinet contains the system electronics, fuses and standby battery.

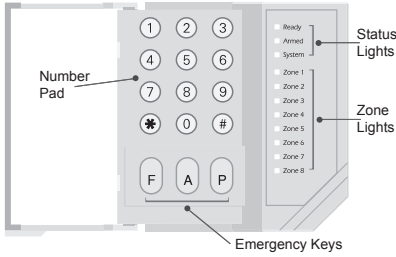
NOTE: Only the installer or service professional should have access to the control panel.

All the keypads have an audible indicator and command entry keys. The LED keypads have a group of zone and system status lights. The LCD keypad has an alphanumeric liquid crystal display (LCD). The keypad is used to send commands to the system and to display the current system status. The keypad(s) will be mounted in a convenient location inside the protected premises close to the entry/exit door(s).

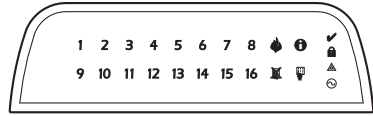
The security system has several zones of area protection and each of these zones will be connected to one or more sensors (motion detectors, glassbreak detectors, door contacts, etc.). A sensor in alarm will be indicated by the corresponding zone lights flashing on a LED keypad or by written messages on the LCD keypad.

PowerSeries System Keypads

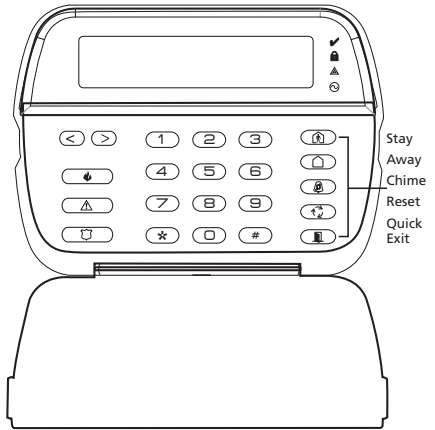
PK1555RKZ



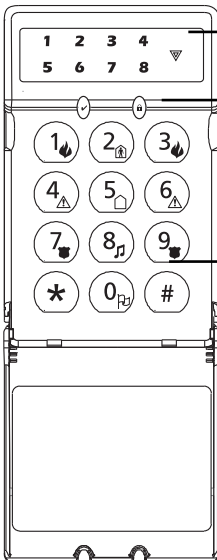
PK5508/PK5516/RFK5508/RFK5516



PK5500/PK5501/RFK5500/RFK5501/RFK5564



LED5511

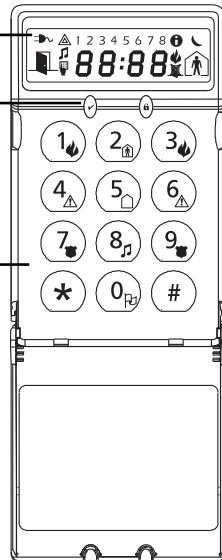


LCD5511

Display

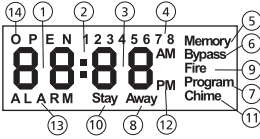
System Lights

Number Pad

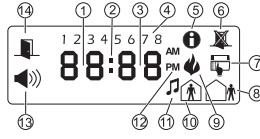


Keypad Display Symbols

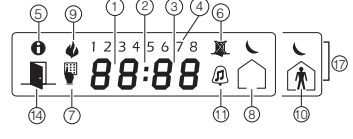
LCD5501 Fixed Message



LCD5501 ICON



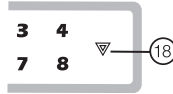
PK5501/RFK5501



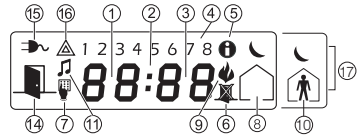
PK5508/5516/RFK5508/5516



LED5511



LCD5511



- 1 **Clock Digits 1, 2** – These two 7 segment clock digits indicate the hour digits when the local clock is active, and identify the zone when the OPEN or ALARM icons are active. These two digits scroll one zone per second from the lowest zone number to the highest when scrolling through zones.
- 2 **:** (**Colon**) – This icon is the hours/minutes divider and will flash once a second when the local clock is active.
- 3 **Clock Digits 3, 4** – These two 7 segment displays are the minute digits when the local clock is active.
- 4 **1 to 8** – These numbers identify troubles when [*][2] is pressed.
- 5 **Memory** – Indicates that there are alarms in memory.
- 6 **Bypass** – Indicates that there are zones automatically or manually bypassed.
- 7 **Program** – indicates that the system is in Installer's Programming, or the keypad is busy.
- 8 **Away** – Indicates that the panel is armed in the Away Mode.
- 9 **Fire** – Indicates that there are fire alarms in memory.
- 10 **Stay** – Indicates that the panel is armed in the Stay Mode.
- 11 **Chime** – This icon turns on when the Chime function key is pressed to enable Door Chime on the system. It will turn off when the chime function key is pressed again to disable Door Chime.
- 12 **AM, PM** – This icon indicates that the local clock is displaying 12 Hr. time. These icons will not be on if the system is programmed for 24 Hr. time.
- 13 **ALARM** – This icon is used with clock digits 1 and 2 to indicate zones in alarm on the system. When a zone is in alarm, the ALARM icon will turn on, and 7 segment displays 1 and 2 will scroll through the zones in alarm.
- 14 **OPEN** – This icon is used with clock digits 1 and 2 to indicate violated zones (not alarm) on the system. When zones are opened, the OPEN icon will turn on, and 7 segment displays 1 and 2 will scroll through the violated zones.
- 15 **AC** – Indicates that AC is present at the main panel.
- 16 **System Trouble** – Indicates that a system trouble is active.
- 17 **Night** – Indicates that the panel is armed in the Night Mode.
- 18 **System** - Indicates one or more of the following:
 - Memory** – Indicates that there are alarms in memory.
 - Bypass** – Indicates that there are zones automatically or manually bypassed.
 - System Trouble** – This icon is displayed when a system trouble is active.
- 19 **Ready Light (green)** – If the Ready light is on, the system is ready for arming.
- 20 **Armed Light (red)** – If the Armed light is on, the system has been armed successfully.

IMPORTANT NOTICE

A security system cannot prevent emergencies. It is only intended to alert you and, if included, your central station of an emergency situation. Security systems are very reliable but they may not work under all conditions and they are not a substitute for prudent security practices or life and property insurance. Your security system should be installed and serviced by qualified security professionals who should instruct you on the level of protection that has been provided and on system operations.

PK5500/RFK5500/RFK5564 Language Selection

Your keypad may have the capability to display messages in different languages.



1. Press and hold both [<][>] scroll keys simultaneously.
2. Using the [<][>] keys, scroll through the available languages.
3. Press [*] to select your desired language.

NOTE: For systems compliant with the EN50131-1 standard, enter the Installer Code to access and change the keypad language.

Arming & Disarming the System

Arming (Turning On/Setting)


Close all sensors (i.e. stop motion and close doors). The Ready (✓) indicator should be on.

To arm, press and hold the Away Key () for 2 seconds and/or enter your Access Code, or press [*][0] to Quick Arm. During the setting state (exit delay active) the Armed () and Ready (✓) indicators will turn on, and the keypad will sound one beep per second. You now have ____ seconds to leave the premises (please check with your installer to have this time programmed). To cancel the arming sequence, enter your access code.

Away Arming (Turned On/Set)

When the exit delay is completed, the alarm system is armed/set and this is indicated on the keypad as follows: the Ready (✓) indicator will turn off, the Armed indicator will remain on and the keypad will stop sounding.

Quick Exit

If the system is armed and you need to exit, use the Quick Exit function to avoid disarming and rearming the system. Press and hold the Quick Exit key () for 2 seconds or press [*][0]. You now have 2 minutes to leave the premises through your exit door. When the door is closed again, the remaining exit time is cancelled.

Bell/Siren Sounds After Away Arming

Audible Exit Fault

In an attempt to reduce false alarms, the Audible Exit Fault is designed to notify you of an improper exit when arming the system in the Away mode. In the event that you fail to exit the premises during the allotted exit delay period, or if you do not securely close the Exit/Entry door, the system will notify you that it was improperly armed in two ways: the keypad will emit one continuous beep and the bell or siren will sound.


Your installer will tell you if this feature has been enabled on your system. If this occurs:

1. Re-enter the premises.
2. Enter your [access code] to disarm the system. You must do this before the entry delay timer expires.
3. Follow the Away arming procedure again, making sure to close the entry/exit door properly. (See "Away Arming (Turned On/Set)".)

Arming Error

An error tone will sound if the system is unable to arm. This will happen if the system is not ready to arm (i.e. sensors are open), or if an incorrect user code has been entered. If this happens, ensure all sensors are secure, press [#] and try again. Please check with your installer to determine if arming is inhibited by any other means.

Disarming (Turning Off /Unsetting)

Enter your access code to disarm anytime the system is armed (Armed () indicator is on). The keypad will beep if you walk through the entry door. Enter your code within ____ seconds to avoid an alarm condition (please check with your installer to have this time programmed).

Disarming Error

If your code is invalid, the system will not disarm and a 2-second error tone will sound. If this happens, press [#] and try again.

Stay Arming (Partially Turning On / Part Setting)

Ask your alarm company if this function is available on your system.

Stay arming will bypass the interior protection (i.e. motion sensors) and arm the perimeter of the system (i.e. doors and windows). Close all sensors (i.e. stop motion and close doors). The Ready (✓) indicator should be on. Press and hold the Stay key (Ⓜ) for 2 seconds and/or enter your Access Code and do not leave the premises (*if your installer has programmed this button*). During the setting state (exit delay active), the Armed (🔒) and Ready (✓) indicators will turn on.

When the exit delay is completed, the alarm system is armed/set and this is indicated on the keypad as follows: the Ready (✓) indicator will turn off, the Armed (🔒) indicator will remain on and the keypad will stop sounding. The Armed (🔒) indicator and Bypass or System indicator will turn on. The system will automatically bypass certain interior sensors (i.e. motion sensors).

NOTE: For SIA FAR listed panels, the Stay Arming Exit Delay will be twice as long as the Away Arming Exit Delay.

Night Arming

To fully arm the system when it has been armed in Stay Mode, press [*][1] at any keypad. All interior zones will now be armed except for devices programmed as Night Zones. Night zones are only armed in Away mode, this permits limited movement within the premises when the system is fully armed. Ensure that your installer has provided you with a list identifying zones programmed as night zones. When the interior zones have been activated (i.e., *(1) you must enter your access code to disarm the system to gain access to interior areas that have not been programmed as night zones.

No-Entry Arming

This allows the system to be armed without an Entry Delay from zones that normally have one.

An entry through any zone will then create an instant alarm.

1. Check that your system is ready to be armed (Ready light is ON)
2. Press [*][9], then your [access code].
 - The Armed light flashes as a reminder that the system is armed and has no entry delay.
 - The keypad sounds fast beeps.
 - The keypad displays "Exit Delay in Progress".
3. The system is now armed in Stay mode.

Silent Exit Delay

If the system is armed using the Stay key (Ⓜ) (Programmable Function Key) or using the "No Entry" Arming method ([*][9][access code]), the audible progress annunciation (keypad buzzer) will be silenced, and the exit time will be doubled for that exit period only (CP-01 versions only).

NOTE: For non CP-01 versions, Standard Exit Time is used.

Remote Arming and Disarming

The system can be armed and/or disarmed using the remote control device (wireless key). When arming the system by using the Arm button on the wireless key, the system will acknowledge the command by sounding a single bell squawk (if bell squawk is enabled) and when disarming using the Disarm button on the wireless key the system will acknowledge the command by sounding two bell squawks (if bell squawk is enabled) that can be heard from the exterior of the premises.

Emergency Keys

Press the 🔥 (F), ⚠️ (A) or 🚒 (P) key for 2 seconds to generate a Fire, Auxiliary or Panic alarm. The keypad sounder will beep indicating that the alarm input has been accepted and transmission to the central station is underway. Ask your alarm company if the emergency keys are available on your system.

NOTE: The Fire keys can be disabled by the installer.

LED5511/LCD5511 Keypad

Press and hold both keys simultaneously for 2 seconds to send the following messages:

①③ Fire Message, ④⑥ Auxiliary Message, ⑦⑨ Panic Message.


When Alarm Sounds

The system can generate 4 different alarm sounds:


- Temporal / Pulsed Siren = Fire Alarm
- 4 beeps, 5-second pause, 4 beeps = Carbon Monoxide Alarm
- Continuous Siren = Intrusion (Burglary Alarm)

NOTE: The priority of signals is fire alarm, carbon monoxide alarm then burglary alarm.

Intrusion (Burglary) Alarm Continuous Siren

-  If you are unsure of the source of the alarm approach with caution! If the alarm was accidental, enter your Access Code to silence the alarm. Call your central station to avoid a dispatch.

Fire Alarm Pulsed Siren

-  **Follow your emergency evacuation plan immediately!**

If the fire alarm was accidental (i.e. burned toast, bathroom steam, etc.), enter your Access Code to silence the alarm. Call your central station to avoid a dispatch. Ask your alarm company if your system has been equipped with fire detection. To reset the detectors, see the Sensor Reset section.

Wireless Carbon Monoxide Alarm

Activation of your CO alarm indicates the presence of carbon monoxide (CO), which can be fatal. During an alarm, the red LED on the CO detector flashes rapidly and buzzer sounds with a repeating cadence of: 4 quick beeps, 5-second pause, 4 quick beeps. Also, during an alarm, the siren connected to the control panel produces a repeating cadence of 4 quick beeps, 5-second pause, 4 quick beeps. The keypad will also provide audible and visual indication of the CO alarm.

If an alarm sounds:

1. Operate silence button.
2. Call emergency services or your fire department.
3. Immediately move outdoors or to an open door/window.

WARNING: Carefully review your Carbon Monoxide Installation/User Guide to determine the necessary actions required to ensure your safety and ensure that the equipment is operating correctly. Incorporate the steps outlined in the guide into your evacuation plan.

Time & Date Programming

Press **[*][6]** plus your Master Access Code or press the time programming function key (programmed by your installer). If you have a Time and Date trouble, press **[8]** from within the trouble menu. Press **[1]** to select Time and Date.

When using the PK5500/RFK5500/RFK5564, use the **[<][>]** scroll keys to find the menu option and press **[*]** to select. Enter the time in 24-hr format (HH:MM), followed by the date (MM:DD:YY). Press **[#]** to exit programming.

NOTE: If you have an LCD keypad, your installer may have programmed your system to display the time and date while the keypad is idle. If this is the case, you can press the **[#]** key to clear the date and time display.

Bypassing Zones

Use the zone bypassing feature when you need access to a protected area while the system is armed, or when a zone is temporarily out of service, but you need to arm the system. Bypassed zones will not be able to sound an alarm. Bypassing zones reduces the level of security. If you are bypassing a zone because it is not working, call a service technician immediately so that the problem can be resolved and your system returned to proper working order. Ensure that no zones are unintentionally bypassed when arming your system. Zones cannot be bypassed once the system is armed. Bypassed zones are automatically cancelled each time the system is disarmed and must be bypassed again, if required, before the next arming.

NOTE: 24-hour zones can only be unbypassed manually.

NOTE: For security reasons, your installer has programmed the system to prevent you from bypassing certain zones (e.g., smoke detectors).

Bypassing Zones with a PK5500/RFK5500/RFK5564

Start with disarming the system.

1. Press [*] to enter the function menu. The keypad will display "Press * for < > Zone Bypass".
2. Press [1] or [*], then your [access code] (if required). The keypad will display "Zone Search < > Zone Name".
3. Enter the two-digit number of the zone(s) to be bypassed (01-64).

You can also use the [<][>] keys to find the zone to be bypassed, and then press [*] to select the zone. The keypad will display "Zone Search < > "Zone Name?". "B" will appear on the display to show that the zone is bypassed. If a zone is open (e.g., door with door contact is open), the keypad will display "Zone Search < > "Zone Name" O". If you bypass the open zone, a "B" will replace the "O".

4. To unbypass a zone, enter the two-digit number of the zone(s) to be bypassed (01-64). You can also use the [<][>] keys to find the zone, and then press [*] to select the zone. The "B" will disappear from the display to show that the zone is no longer bypassed.
5. To exit bypassing mode and return to the Ready state, press [#].

Bypassing Zones with a PK5508/PK5516/PK5501/RFK5508/RFK5516/RFK5501

1. Disarm the system.
2. Press [*][1], then your [access code] (if required).
3. Enter the two-digit number of the zone(s) to be bypassed (01-64). On PK5508/PK5516/RFK5508/RFK5516 keypads, the zone light will turn on to indicate that the zone is bypassed.
4. To unbypass a zone, enter the two-digit number of the zone (01-64). On PK5508/PK5516/RFK5508/RFK5516 keypads, the zone light will turn off to indicate that the zone is not bypassed.
5. To exit bypassing mode and return to the Ready state, press [#].

Activating All Bypassed Zones

1. Press [*][1], then your [access code] (if necessary).
2. Press [0][0]. To exit bypassing mode and return to the Ready state, press [#].

Recalling Bypassed Zones

To recall the last set of bypassed zones:

1. Press [*][1], then your [access code] (if necessary).
2. Press [9][9].
3. To exit bypassing mode and return to the Ready state, press [#].

Bypass Groups

A Bypass Group is a selection of zones programmed into the system. If you bypass a group of zones on a regular basis, you can program them into the Bypass Group, so that you do not have to bypass each zone individually every time. One Bypass Group can be programmed on each partition.

To program a Bypass Group:

1. Press [*][1], then your [access code] (if necessary).
2. Enter the two-digit numbers (01-64) of the zones to be included in the Bypass Group. On PK5500/RFK5500/RFK5564 keypads, you can also use the [<][>] keys to find the zone to be included in the bypass group, and then press [*] to select the zone.
3. To save the selected zone into the group, press [9][5].
4. To exit bypassing mode and return to the Ready state, press [#].

To select a Bypass Group when arming the system:

1. Press [*][1], then your [access code] (if necessary).
2. Press [9][1]. The next time the system is armed, the zones in this group will be bypassed.
3. To exit bypassing mode and return to the Ready state, press [#].

NOTE: Bypass Groups are only recalled if the system is armed/disarmed after programming the bypass group.

NOTE: This feature is not to be used in UL listed installations.

Trouble Conditions

When a trouble condition is detected, the Trouble (▲) or System indicator will turn on, and the keypad will beep every 10 seconds. Press the [#] key to silence the beeps. Press [*][2] to view the trouble condition. The Trouble (▲) or System indicator will flash. The corresponding trouble will be represented by numbers 1-8.

LED/ DIGIT	Trouble Condition	Comments	Action
1	Service Required (Press [1] for more details)	(1) Low Battery (2) Bell Circuit (3) System Trouble (4) System Tamper (5) Module Supervision (6) RF Jam Detected (7) PC5204 Low Battery (8) PC5204 AC Failure	Call for service
2	Loss of AC Power	If the building and/or neighbourhood has lost electrical power, the system will continue to operate on battery for several hours.	Call for service
3	Telephone Line Fault	The system has detected that the telephone line is disconnected.	Call for service
4	Failure to Communicate	The system attempted to communicate with the monitoring station, but failed. This may be due to Trouble 3.	Call for service
5	Sensor (or Zone) Fault	The system is experiencing difficulties with one or more sensors on the system. Press 5 to display the zone.	Call for service
6	Sensor (or Zone) Tamper	The system has detected a tamper condition with one or more sensors on the system. Press 6 to display the zone.	Call for service
7	Sensor (or Zone) Low Battery	The system has detected a low battery condition with one or more modules/sensors on the system. Continue to press 7 to display the zone, keypad, wireless key(s) and RF Delinquency low battery conditions. Press 7 again to see zone troubles.	Call for service
8	Loss of Time & Date	If complete power was lost (AC and Battery), the time and date will need to be re-programmed.	Re-program Time & Date (page 6)

Trouble Menu Acknowledgement

If the Arming Inhibit for All Troubles feature is enabled, Trouble Menu Acknowledgement may be used. To use this feature while in the Trouble Menu (*[2]), press [9] to acknowledge and override the existing troubles, so the system can be armed. An override event will also be generated and logged, thus identifying the user. To override open zones, use the Zone Bypass feature (*[1]).


Alarm Memory

When an alarm occurs, the Memory or System indicator (and Fire indicator, if applicable) will turn on. To view which sensor(s) generated the alarm, press *[3]. The Memory or System indicator and corresponding sensor number will flash (i.e. sensor 3).

For PK5500/RFK5500/RFK5564 keypads use the [<|>] scroll keys to view the sensors in alarm memory. Press [#] to exit. To clear the memory, arm and disarm the system.

If an alarm sounded while armed, the keypad will automatically go to alarm memory when you disarm the system. In this instance, you should approach with caution, as the intruder may still be within the building/premises.

Door Chime (Entry/Exit Beeps)

To turn the door chime function on or off, press and hold the Chime key () for 2 seconds or press *[4].

Access Code Programming

In addition to the Master Access Code, you can program up to 94 additional User Access codes (access codes 1-48 for PC1616, access codes 1-72 for PC1832 and access codes 1-95 for PC1864). Press *[5], plus your Master Access Code. The Program or System indicator will begin to flash, and the Armed (Ⓐ) indicator will turn on.

Enter the 2-digit number to be programmed (i.e. 06 for user access code 6; enter 40 for the Master Access Code).

When using the PK5500/RFK5500/RFK5564, use the [<][>] keys to find the specific code and press [*] to select. Enter the new 4 or 6-digit access code, or press [*] to erase it. When programming is complete, enter another 2-digit code to program or press [#] to exit.

For systems using multiple partitions/areas, access codes can be assigned to specific or multiple partitions/areas. Please contact your alarm company for details.

The access codes have programmable attributes which allow zone bypassing, remote access using the ESCORT5580TC or one-time use activation.

When using 6-digit access codes, the minimum number of variations of access codes are 20833 for the PC1616, 13888 for the PC1832 and 10638 for the PC1864.

Access Codes

[*][5][Master Code] (when disarmed)

The [*][5] User's Programming command is used to program additional access codes.

User Codes - User Codes 1-48 are available for the PC1616. User Codes 01-72 are available for the PC1832. User Codes 1-95 are available for the PC1864.

Master Code (Access Code 40) - The Master Code can only be changed by the Installer, if programmed.

Supervisor Codes - These codes are always valid when entering the [*][5] User Code Programming section. However, these codes can only program additional codes which have equal or lesser attributes. Once programmed, the Supervisor Codes receive the Master Code's attributes. These attributes are changeable. Any User Code can be made a supervisor code by enabling User Code Attribute 1 (please see below for details).

Duress Codes - Duress codes are standard User Codes that will transmit the Duress Reporting Code whenever the code is entered to perform any function on the system. Any User Code can be made a Duress Code by enabling User Code Attribute 2 (please see below for details).

NOTE: Duress codes are not valid when entering [*][5], [*][6] or [*][8] sections.

NOTE: Access codes cannot be programmed as a duplicate or as a "Code +/- 1".

User Code Attributes

1. The default attributes of a new code will be the attributes of the code used to enter [*][5] whether it is a new code or an existing code being programmed.
2. System Master (Code 40) has Partition Access for all partitions, as well as Attributes 3-4 ON by default.

NOTE: These attributes are not changeable.

Inherent Attributes (all codes except installer and maintenance)

Arm / Disarm - Any Access Code with Partition Access enabled will be valid for arming and disarming that partition.

Command Outputs (*][7][1], [*][7][2], [*][7][3], and [*][7][4]) - If these outputs require Access Code entry, any Access Code with Partition Access will be valid for performing the [*][7][1-4][Access Code] functions on that partition.

Programmable Attributes (*][5][Master/Supervisor Code][99][Code])

- | | |
|---------------------------|--------------------------------------|
| 1. Supervisor Code | 5. For Future Use |
| 2. Duress Code | 6. For Future Use |
| 3. Zone Bypassing Enabled | 7. Bell Squawk upon Arming/Disarming |
| 4. ESCORT Access | 8. One Time Use Code |

Bell Squawk Attribute

This attribute is used to determine whether an access code should generate an arming/disarming Bell Squawk upon entry of the code for Away arming. The wireless keys with access codes associated with them may generate Arming/Disarming Bell squawks. If desired, this option may be used with codes that are manually entered. Please contact your installer to have this programmed.

NOTE: The Master Code cannot use the Bell Squawk attribute, but is required to enable it for other codes.

NOTE: This feature cannot prevent the Arm/Disarming squawks from being generated if an access code assigned to a WLS Key is manually entered at a keypad.

Partition Assignment Mask

In order to accommodate Access Code Partition Assignment for the multiple partitions found on this product the user must enter **[*][5][Master Code][98][Code number to be change]** (ex. **[*][5][1234][98][Code 03]**). Under this section, each bit represents the corresponding partition's access (i.e. Bit 4 represents Partition 4 access).

The Master Code has access to all partitions, and cannot be modified.

Partition Assignment Mask (**[*][5][Master/Supervisor Code][98][Code]**)

1. Partition One Access (available for PC1616/PC1832/PC1864)
2. Partition Two Access (available for PC1616/PC1832/PC1864)
3. Partition Three Access (available for PC1832/PC1864)
4. Partition Four Access (available for PC1832/PC1864)
5. Partition Five Access (available for PC1864)
6. Partition Six Access (available for PC1864)
7. Partition Seven Access (available for PC1864)
8. Partition Eight Access (available for PC1864)

Notes on Access Codes and Programming

1. - **[*][5][MASTER CODE]** [01 to 95] to program access codes
- **[*][5][MASTER CODE][98]** enters the Partition Assignment Mode [01 to 39 and 41 to 95] to edit access code partition assignments
- **[*][5][MASTER CODE][99]** Enters the Attribute Mode to edit access code Attributes.
2. The Master Code's attributes cannot be changed.
3. When a new code is programmed in **[*][5]** it will be checked against all other codes in the system. If a duplicate code is found, an error tone is given and the code is returned to what it was before it was changed. This applies to both 4 and 6-digit codes.

Erasing an Access Code

To erase a code, select the code and enter **[*]** as the first digit. If **[*]** is entered, the system will delete the code immediately and the user will be returned to select another code.

User Function Commands

First disarm the system then enter **[*][6][Master Code]**.

The **[*][6]** command is used to gain access to the following list of Master functions of the system.

[1] Time and Date

Enter 4 digits for 24 Hour System Time (HH-MM). Valid entries are 00-23 for the hour and 00-59 for minutes. Enter 6 digits for the Month, Day and Year (MM-DD-YY)

[2] Auto-arm/Disarm Control

Pressing [2] while in the User Function menu will enable (3 beeps) or disable (one long beep) the Auto-Arm and Auto-Disarm feature, by partition. With this feature enabled, the panel will automatically arm in the Away mode (Stay Away zones active) or disarm at the same time each day. The auto-arm time is programmed with the **[*][6][Master Code][3]** command. Auto-Disarm must be programmed by the system installer.

[3] Auto-arm Time

The system can be programmed to arm at a programmed time each day, per partition. Upon entry of this section, enter 4 digits for the 24-hour Auto-arm time for each day of the week.

At the selected auto-arm time, the keypad buzzers will sound for a programmed amount of time (programmable by the installer only) to warn that an auto-arm is in progress. The bell can also be programmed to squawk once every 10 seconds during this warning period. When the warning period is complete, the system will arm with no exit delay and in the Away Mode.

Auto-arming can be cancelled or postponed by entering a valid access code only, during the programmed warning period. Auto-arming will be attempted at the same time the next day. When the auto-arming process is cancelled or postponed, the Auto-arm Cancellation Reporting Code will be transmitted (if programmed).

If arming is inhibited by one of the following, the Auto-arm Cancellation transmission will be communicated.

- AC / DC Inhibit Arm
- Latching System Tamper
- Zone Expander Supervisory Fault

[4] System Test

The system's Bell Output (2s), Keypad Lights and Communicator are tested. This test will also measure the panel's standby battery.

[5] Enable DLS / Allow System Service

If enabled, the installer will be able to access Installer Programming by DLS. In case of DLS access this provides a window where rings will be detected by the panel. The DLS window will remain open for 6hrs, during which time the installer will be able to enter DLS an unlimited number of times. After the 6-hr window has expired, Installer's Programming will be unavailable again until the window is re-opened.

[6] User Call-up

If enabled by the Installer, the panel will make 1 attempt to call the downloading computer. The downloading computer must be waiting for the panel to call before downloading can be performed.

[7] For Future Use

[8] User Walk Test (For Europe only)

This test allows the user to verify operation of system detectors and notifies the central station that a Walk Test is in progress.

NOTE: Fire zones, the 'F' key, and 2-wire smoke detectors are excluded from this test. Violation of these zones will cause the system to exit the walk test then generate and transmit alarm condition to the central station.

1. Press **[*][6][8]** to enable Walk Test. The system will notify the Central Station that a walk test has begun.
2. Violate all each detector (zone) in sequence. A squawk will occur at the keypad, all LEDs on the keypad will flash and the violation will be recorded in the Event Buffer.
3. Restore zones. Press **[*][6][8]** to end the Walk Test. The system will notify the Central Station that the walk test has been terminated.

NOTE: If a zone is not violated within 15 minutes of activating the Walk Test, the system will automatically exit the Walk Test and resume normal operation.

Changing Brightness/Contrast

PK5500/RFK5500/RFK5564 keypads

When this option is selected, the keypad will allow you to scroll through 10 different brightness/contrast levels.

1. Press **[*][6]**[Master code].
2. Use the [**<**][**>**] keys to scroll to either Brightness Control or Contrast Control.
3. Press **[*]** to select the setting you want to adjust.
4. a) 'Brightness Control': There are multiple backlighting levels. Use the [**<**][**>**] keys to scroll to the desired level.
b) 'Contrast Control': There are 10 different display contrast levels. Use the [**<**][**>**] keys to scroll to the desired contrast level.
5. To exit, press **[#]**.

PK5501/PK5508/PK5516/RFK5501/RFK5508/RFK5516 keypads

When this option is selected, the keypad will allow you to scroll through 4 different backlighting levels. A level of 0 disables the backlighting.

1. Press **[*][6]**[Master Code].
2. Use the **[>]** right scroll key to move through the 4 different backlighting levels.
3. The level is automatically saved when you press **[#]** to exit.

Changing the Buzzer Level

PK5500/RFK5500/RFK5564 keypads

When this option is selected, the keypad will allow you to scroll through 21 different buzzer levels. A level of 00 disables the buzzer.

1. Press **[*][6]**[Master Code].
2. Use the **[<][>]** scroll keys to scroll to Buzzer Control.
3. There are 21 different levels, use the **[<][>]** keys to scroll to the desired level.

PK5501/PK5508/PK5516/RFK5501/RFK5508/RFK5516 keypads

1. Press **[*][6]**[Master Code].
2. Use the **[<]** left scroll key to move through the 21 different buzzer levels.
3. The level is automatically saved when you press **[#]** to exit.

Viewing the Event Buffer from PK5500/RFK5500/RFK5564 Keypads

The event buffer will show you a list of the last 500 events that have occurred on your system. You must use an LCD keypad to view the event buffer.

1. Press **[*][6]**[Master Code].
2. To select Event Buffer viewing, press **[*]**.
3. The keypad will display the event number, partition or area, and the time and date. Press **[*]** to switch between this information and the event details.
4. Use the **[<][>]** keys to scroll through the events in the buffer.
5. To exit event buffer viewing, press **[#]**.

PK5500/RFK5500/RFK5564 Global Status Screen

When the keypad is loaned to global mode (pressing and holding the **[#]** key), you will see a Global Partition Status screen. This shows basic status for up to 8 partitions, depending on the configuration of your system. The screen looks similar to the example shown below.

```
1 2 3 4 5 6 7 8
A R ! N - - - -
```

Each partition is identified by a number. Below each number is the current status of that partition.

A - Partition is Armed

N - Partition is Not Ready to Arm, or keypad is blanked


R - Partition is Ready to Arm

! - Partition is in Alarm

- - Partition is Not Enabled

Sensor Reset

Certain sensors, after having detected an alarm condition, require a reset to exit the alarm condition (i.e. glass break sensors, smoke detectors, etc.). Ask your alarm company if this function is required on your system.

To reset the detectors, press and hold the Reset () key for 2 seconds or press **[*][7][2]**.

If a sensor fails to reset, it may still be detecting an alarm condition. If the sensor reset is successful, the alarm is cancelled. If unsuccessful, the alarm will reactivate or continue.

Testing Your System

NOTE: If you are going to perform a System Test, call your Monitoring Station to inform them when you begin and also when you end the test.

Testing Your Keypad Sounder and Siren

The System Test provides several system tests, and a two-second check of the keypad sounder and bell or siren.

1. Press **[*][6][Master Code][4]**.
2. The following will occur:
 - The system activates all keypad sounders and bells or sirens for 2 seconds. All keypad lights turn ON.
 - PK5500/RFK5500/RFK5564 keypads will light all pixels
 - The Ready, Armed, and Trouble LED's will flash for the duration of the test
3. To exit the function menu, press **[#]**.

Testing Your Entire System

All smoke detectors in this installation must be tested by your smoke detector installer or dealer once a year to ensure they are functioning correctly. It is the user's responsibility to test the system weekly (excluding smoke detectors). Ensure you follow all the steps in the 'Testing Your System' section above.

NOTE: Should the system fail to function properly, call your installation company for service immediately.

1. Prior to testing, ensure that the system is disarmed and the Ready light is on.
2. Press **[#]** and close all zones to return the system to the Ready state.
3. Perform a System Test by following the steps in the previous section.
4. To test the zones, activate each detector in turn (e.g., open each door/window or walk in motion detector areas).

PK5500/RFK5500/RFK5564 keypads will display the following message when each zone (detector) is activated: "Secure System Before Arming < >", "Secure System or Enter Code" or "Secure or Arm System". Use the **[<][>]** scroll keys to view which zones are open. The message will disappear when the zones are closed.

On an PK5501/RFK5501 keypad, the display says "Open" when any zone (detector) is activated. To see which zones are open, press **[#]**. The keypad will scroll the numbers of all open zones.

On a PK5508/PK5516/RFK5508/RFK5516 keypad, the zone light turns ON when the zone (detector) is activated. The zone light turns OFF when the zone is closed (e.g., door or window closed).

NOTE: Some features described above will not be functional unless enabled by your installer. Ask your installer which features are functional on your system.

Walk Test Mode

The installer can initiate a Walk Test mode for the system. While in Walk Test mode, The Ready, Armed, and Trouble LED's will flash to indicate that Walk Test is active. When the system automatically terminates the Walk Test modes, it will annunciate with an audible warning (5 beeps every 10 seconds), beginning five minutes prior to the termination of the test.

Allowing Computer Access To Your System

From time to time, your installer may need to send information to or retrieve information from your security system. Your installer will do this by having a computer call your system over the telephone line. You may need to prepare your system to receive this 'downloading' call. To do this:

1. Press **[*][6][Master code][5]** at any keypad. This allows downloading for a limited period of time. During this time, the system will answer incoming downloading calls.

For more information on this feature, please ask your installer.

Reference Sheets

Fill out the following information for future reference and store this guide in a safe place.

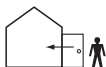
System Information

Enabled?

[F] FIRE [A] AUXILIARY [P] PANIC



The Exit Delay Time is _____ seconds.



The Entry Delay Time is _____ seconds.

For Service

Central Station Information

Account#: _____ Telephone#: _____

Installer Information :

Company: _____ Telephone#: _____

Battery Installation / Service Date:



If you suspect a false alarm signal has been sent to the central monitoring station, call the station to avoid an unnecessary response.

Access Codes

PC1616/PC1832/PC1864

Master Code [40] : _____

Code	Access Code	Code	Access Code	Code	Access Code	Code	Access Code
01		13		25		37	
02		14		26		38	
03		15		27		39	
04		16		28		40	
05		17		29		41	
06		18		30		42	
07		19		31		43	
08		20		32		44	
09		21		33		45	
10		22		34		46	
11		23		35		47	
12		24		36		48	

PC1832/PC1864

Code	Access Code	Code	Access Code	Code	Access Code	Code	Access Code
49		55		61		67	
50		56		62		68	
51		57		63		69	
52		58		64		70	
53		59		65		71	
54		60		66		72	

PC1864

Code	Access Code	Code	Access Code	Code	Access Code	Code	Access Code
73		79		85		91	
74		80		86		92	
75		81		87		93	
76		82		88		94	
77		83		89		95	
78		84		90			

Sensor / Zone Information

Sensor	Protected Area	Sensor Type	Sensor	Protected Area	Sensor Type
01			33		
02			34		
03			35		
04			36		
05			37		
06			38		
07			39		
08			40		
09			41		
10			42		
11			43		
12			44		
13			45		
14			46		
15			47		

Sensor	Protected Area	Sensor Type	Sensor	Protected Area	Sensor Type
16			48		
17			49		
18			50		
19			51		
20			52		
21			53		
22			54		
23			55		
24			56		
25			57		
26			58		
27			59		
28			60		
29			61		
30			62		
31			63		
32			64		

Guidelines for Locating Smoke Detectors and CO Detectors

The following information is for general guidance only and it is recommended that local fire codes and regulations be consulted when locating and installing smoke and CO alarms.

Smoke Detectors

Research has shown that all hostile fires in homes generate smoke to a greater or lesser extent. Experiments with typical fires in homes indicate that detectable quantities of smoke precede detectable levels of heat in most cases. For these reasons, smoke alarms should be installed outside of each sleeping area and on each storey of the home.

The following information is for general guidance only and it is recommended that local fire codes and regulations be consulted when locating and installing smoke alarms.

It is recommended that additional smoke alarms beyond those required for minimum protection be installed. Additional areas that should be protected include: the basement; bedrooms, especially where smokers sleep; dining rooms; furnace and utility rooms; and any hallways not protected by the required units. On smooth ceilings, detectors may be spaced 9.1m (30 feet) apart as a guide. Other spacing may be required depending on ceiling height, air movement, the presence of joists, uninsulated ceilings, etc. Consult National Fire Alarm Code NFPA 72, CAN/ULC-S553-02 or other appropriate national standards for installation recommendations.

- Do not locate smoke detectors at the top of peaked or gabled ceilings; the dead air space in these locations may prevent the unit from detecting smoke.
- Avoid areas with turbulent air flow, such as near doors, fans or windows. Rapid air movement around the detector may prevent smoke from entering the unit.
- Do not locate detectors in areas of high humidity.
- Do not locate detectors in areas where the temperature rises above 38°C (100°F) or falls below 5°C (41°F).

Smoke detectors should always be installed in USA in accordance with Chapter 11 of NFPA 72, the National Fire Alarm Code: 11.5.1.1.

Where required by applicable laws, codes, or standards for a specific type of occupancy, approved single- and multiple-station smoke alarms shall be installed as follows:

- (1) In all sleeping rooms and guest rooms.
- (2) Outside of each separate dwelling unit sleeping area, within 6.4 m (21 ft) of any door to a sleeping room, the distance measured along a path of travel.
- (3) On every level of a dwelling unit, including basements.
- (4) On every level of a residential board and care occupancy (small facility), including basements and excluding crawl spaces and unfinished attics.
- (5) In the living area(s) of a guest suite.
- (6) In the living area(s) of a residential board and care occupancy (small facility).

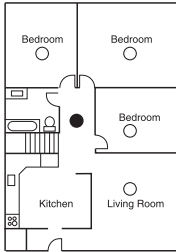


Figure 1

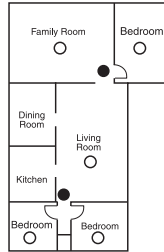


Figure 2

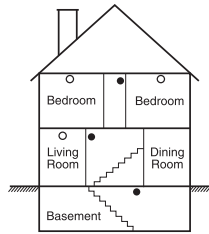


Figure 3

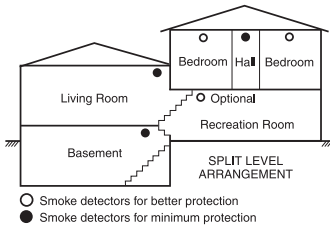
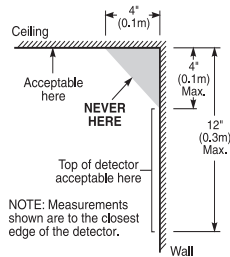


Figure 3a



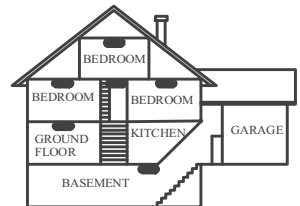
Carbon Monoxide Detectors

Carbon monoxide is colorless, odorless, tasteless, and very toxic, it also moves freely in the air. CO detectors can measure the concentration and sound a loud alarm before a potentially harmful level is reached. The human body is most vulnerable to the effects of CO gas during sleeping hours; therefore, CO detectors should be located in or as near as possible to sleeping areas of the home. For maximum protection, a CO alarm should be located outside primary sleeping areas or on each level of your home. Figure 5 indicates the suggested locations in the home.

Do **NOT** place the CO alarm in the following areas:

- Where the temperature may drop below -10°C or exceed 40°C
- Near paint thinner fumes
- Within 5 feet (1.5m) of open flame appliances such as furnaces, stoves and fireplaces
- In exhaust streams from gas engines, vents, flues or chimneys
- Do not place in close proximity to an automobile exhaust pipe; this will damage the detector

PLEASE REFER TO THE CO DETECTOR INSTALLATION AND OPERATING INSTRUCTION SHEET FOR SAFETY INSTRUCTIONS AND EMERGENCY INFORMATION.



● CARBON MONOXIDE DETECTOR

Figure 5

Household Fire Safety Audit

Read this section carefully for important information about fire safety.

Most fires occur in the home. To minimize this danger, we recommend that a household fire safety audit be conducted and a fire escape plan be developed.

1. Are all electrical appliances and outlets in a safe condition? Check for frayed cords, overloaded lighting circuits, etc. If you are uncertain about the condition of your electrical appliances or household service, have a professional evaluate these units.
2. Are all flammable liquids stored safely in closed containers in a well-ventilated cool area? Cleaning with flammable liquids should be avoided.
3. Are fire-hazardous materials (e.g., matches) well out of reach of children?
4. Are furnaces and wood-burning appliances properly installed, clean and in good working order? Have a professional evaluate these appliances.

Fire Escape Planning

There is often very little time between the detection of a fire and the time it becomes deadly. It is thus very important that a family escape plan be developed and rehearsed.








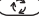

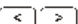







1. Every family member should participate in developing the escape plan.
2. Study the possible escape routes from each location within the house. Since many fires occur at night, special attention should be given to the escape routes from sleeping quarters.
3. Escape from a bedroom must be possible without opening the interior door.

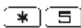



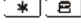
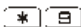
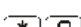
Consider the following when making your escape plans:

- Make sure that all border doors and windows are easily opened. Ensure that they are not painted shut, and that their locking mechanisms operate smoothly.
- If opening or using the exit is too difficult for children, the elderly or handicapped, plans for rescue should be developed. This includes making sure that those who are to perform the rescue can promptly hear the fire warning signal.
- If the exit is above the ground level, an approved fire ladder or rope should be provided as well as training in its use.
- Exits on the ground level should be kept clear. Be sure to remove snow from exterior patio doors in winter; outdoor furniture or equipment should not block exits.
- Each person should know the predetermined assembly point where everyone can be accounted for (e.g., across the street or at a neighbour's house). Once everyone is out of the building, call the fire department.
- A good plan emphasizes quick escape. Do not investigate or attempt to fight the fire, and do not gather belongings as this can waste valuable time. Once outside, do not re-enter the house. Wait for the fire department.
- Write the fire escape plan down and rehearse it frequently so that should an emergency arise, everyone will know what to do. Revise the plan as conditions change, such as the number of people in the home, or if there are changes to the building's construction.
- Make sure your fire warning system is operational by conducting weekly tests. If you are unsure about system operation, contact your installer.
- We recommend that you contact your local fire department and request further information on fire safety and escape planning. If available, have your local fire prevention officer conduct an in-house fire safety inspection.

Keypad Quick Guide

The following table summarizes the keys, indicators, and most often used commands of the keypad.

Status Lights		
	Ready - Must be on to arm system. All zones must be secured or bypassed and the system disarmed for this light to activate.	
	Armed - Indicates system is armed. If the Ready light and the Armed light are both on it indicates an Exit Delay is in progress.	
	Trouble - On indicates a system malfunction or tamper. Flashing indicates that the keypad has a low battery condition. Follow the instructions displayed or enter [*][2] to view trouble. The Trouble light will turn off when the trouble is corrected.	
	AC Power - Indicates AC Power is present. The AC Power light will turn off when AC is absent.	
Function Keys		
	Stay	Arms the system in Stay Mode.
	Away	Arms the system in Away Mode (default).
	Chime	Same as pressing [*][4] on the keypad.
	Reset	Same as pressing [*][7][2] on the keypad.
	Exit	Same as pressing [*][0] on the keypad.
Special Keys		
	Language Selection - Press and hold both buttons simultaneously for 2 seconds to activate. Scroll to the desired language. Press [*] to select choice.	
	Fire (F) - Press and hold this button for 2 seconds to activate.	These keys must be programmed by the installer to function.
	Auxiliary (A) - Press and hold this button for 2 seconds to activate.	
	Panic (P) - Press and hold this button for 2 seconds to activate.	
User Commands		
Press [*] to select. Press [< >] to scroll. Press [#] to exit.		
PRESS...	To ...	
	Bypass Zones	
	Press [0][0]	Clear Bypass
	Press [9][9]	Bypass Recall
	Press [9][5]	Save Bypass
	Press [9][1]	Recall Save
	View System Troubles	Scroll to view all troubles
	View Alarms in Memory	Scroll to view alarms
	Chime ON/OFF	Turn chime on and off

	Program User Codes Change Attributes	Press [< >] buttons to scroll to user code. Enter [Master Code][9][xx] to enter the user code (xx = 1-16). [1] Supervisor's Code [2] Duress Code [3] Zone Bypassing [4] Remote Access [5]-[6] Future Use [7] Bell/Siren Squawk Output [8] One Time Use Code
User Commands		
	User Options 	Event Buffer System Test Time and Date System Service/DLS User Call-up Walk Test Brightness Control Buzzer Level Control Contrast Control Late to Open
	PGM Commands	If programmed by the installer, can be used to activate events such as opening/closing garage doors.
	Installer Programming	Requires a special code.
	No-Entry Arming	The system will arm in Stay mode after the exit delay expires, the entry delay is disabled.
	Quick Arm/Quick Exit	Quick Arm is equivalent to entering your user code. Quick Exit allows you to exit the premises without disarming the system.

WARNING Please Read Carefully

Note to Installers

This warning contains vital information. As the only individual in contact with system users, it is your responsibility to bring each item in this warning to the attention of the users of this system.

System Failures

This system has been carefully designed to be as effective as possible. There are circumstances, however, involving fire, burglary, or other types of emergencies where it may not provide protection. Any alarm system of any type may be compromised deliberately or may fail to operate as expected for a variety of reasons. Some but not all of these reasons may be:

Inadequate Installation

A security system must be installed properly in order to provide adequate protection. Every installation should be evaluated by a security professional to ensure that all access points and areas are covered. Locks and latches on windows and doors must be secure and operate as intended. Windows, doors, walls, ceilings and other building materials must be of sufficient strength and construction to provide the level of protection expected. A reevaluation must be done during and after any construction activity. An evaluation by the fire and/or police department is highly recommended if this service is available.

Criminal Knowledge

This system contains security features which were known to be effective at the time of manufacture. It is possible for persons with criminal intent to develop techniques which reduce the effectiveness of these features. It is important that a security system be reviewed periodically to ensure that its features remain effective and that it be updated or replaced if it is found that it does not provide the protection expected.

Access by Intruders

Intruders may enter through an unprotected access point, circumvent a sensing device, evade detection by moving through an area of insufficient coverage, disconnect a warning device, or interfere with or prevent the proper operation of the system.

Power Failure

Control units, intrusion detectors, smoke detectors and many other security devices require an adequate power supply for proper operation. If a device operates from batteries, it is possible for the batteries to fail. Even if the batteries have not failed, they must be charged, in good condition and installed correctly. If a device operates only by AC power, any interruption, however brief, will render that device inoperative while it does not have power. Power interruptions of any length are often accompanied by voltage fluctuations which may damage electronic equipment such as a security system. After a power interruption has occurred, immediately conduct a complete system test to ensure that the system operates as intended.

Failure of Replaceable Batteries

This system's wireless transmitters have been designed to provide several years of battery life under normal conditions. The expected battery life is a function of the device environment, usage and type. Ambient conditions such as high humidity, high or low temperatures, or large temperature fluctuations may reduce the expected battery life. While each transmitting device has a low battery monitor which identifies when the batteries need to be replaced, this monitor may fail to operate as expected. Regular testing and maintenance will keep the system in good operating condition.

Compromise of Radio Frequency (Wireless) Devices

Signals may not reach the receiver under all circumstances which could include metal objects placed on or near the radio path or deliberate jamming or other inadvertent radio signal interference.

System Users

A user may not be able to operate a panic or emergency switch possibly due to permanent or temporary physical disability, inability to reach the device in time, or unfamiliarity with the correct operation. It is important that all system users be trained in the correct operation of the alarm system and that they know how to respond when the system indicates an alarm.

Smoke Detectors

Smoke detectors that are a part of this system may not properly alert occupants of a fire for a number of reasons, some of which follow. The smoke detectors may have been improperly installed or

positioned. Smoke may not be able to reach the smoke detectors, such as when the fire is in a chimney, walls or roofs, or on the other side of closed doors. Smoke detectors may not detect smoke from fires on another level of the residence or building.

Every fire is different in the amount of smoke produced and the rate of burning. Smoke detectors cannot sense all types of fires equally well. Smoke detectors may not provide timely warning of fires caused by carelessness or safety hazards such as smoking in bed, violent explosions, escaping gas, improper storage of flammable materials, overloaded electrical circuits, children playing with matches or arson.

Even if the smoke detector operates as intended, there may be circumstances when there is insufficient warning to allow all occupants to escape in time to avoid injury or death.

Motion Detectors

Motion detectors can only detect motion within the designated areas as shown in their respective installation instructions. They cannot discriminate between intruders and intended occupants. Motion detectors do not provide volumetric area protection. They have multiple beams of detection and motion can only be detected in unobstructed areas covered by these beams. They cannot detect motion which occurs behind walls, ceilings, floor, closed doors, glass partitions, glass doors or windows. Any type of tampering whether intentional or unintentional such as masking, painting, or spraying of any material on the lenses, mirrors, windows or any other part of the detection system will impair its proper operation.

Passive infrared motion detectors operate by sensing changes in temperature. However their effectiveness can be reduced when the ambient temperature rises near or above body temperature or if there are intentional or unintentional sources of heat in or near the detection area. Some of these heat sources could be heaters, radiators, stoves, barbecues, fireplaces, sunlight, steam vents, lighting and so on.

Warning Devices

Warning devices such as sirens, bells, horns, or strobes may not warn people or waken someone sleeping if there is an intervening wall or door. If warning devices are located on a different level of the residence or premise, then it is less likely that the occupants will be alerted or awakened. Audible warning devices may be interfered with by other noise sources such as stereos, radios, televisions, air conditioners or other appliances, or passing traffic. Audible warning devices, however loud, may not be heard by a hearing-impaired person.

Telephone Lines

If telephone lines are used to transmit alarms, they may be out of service or busy for certain periods of time. Also an intruder may cut the telephone line or defeat its operation by more sophisticated means which may be difficult to detect.

Insufficient Time

There may be circumstances when the system will operate as intended, yet the occupants will not be protected from the emergency due to their inability to respond to the warnings in a timely manner. If the system is monitored, the response may not occur in time to protect the occupants or their belongings.

Component Failure

Although every effort has been made to make this system as reliable as possible, the system may fail to function as intended due to the failure of a component.

Inadequate Testing

Most problems that would prevent an alarm system from operating as intended can be found by regular testing and maintenance. The complete system should be tested weekly and immediately after a break-in, an attempted break-in, a fire, a storm, an earthquake, an accident, or any kind of construction activity inside or outside the premises. The testing should include all sensing devices, keypads, consoles, alarm indicating devices and any other operational devices that are part of the system.

Security and Insurance

Regardless of its capabilities, an alarm system is not a substitute for property or life insurance. An alarm system also is not a substitute for property owners, renters, or other occupants to act prudently to prevent or minimize the harmful effects of an emergency situation.

IMPORTANT - READ CAREFULLY: DSC Software purchased with or without Products and Components is copyrighted and is purchased under the following license terms:

- This End-User License Agreement ("EULA") is a legal agreement between You (the company, individual or entity who acquired the Software and any related Hardware) and Digital Security Controls, a division of Tyco Safety Products Canada Ltd. ("DSC"), the manufacturer of the integrated security systems and the developer of the software and any related products or components ("HARDWARE") which You acquired.
- If the DSC software product ("SOFTWARE PRODUCT" or "SOFTWARE") is intended to be accompanied by HARDWARE, and is NOT accompanied by new HARDWARE. You may not use, copy or install the SOFTWARE PRODUCT. The SOFTWARE PRODUCT includes computer software, and may include associated media, printed materials, and "online" or electronic documentation.
- Any software provided along with the SOFTWARE PRODUCT that is associated with a separate end-user license agreement is licensed to You under the terms of that license agreement.
- By installing, copying, downloading, storing, accessing or otherwise using the SOFTWARE PRODUCT, You agree unconditionally to be bound by the terms of this EULA, even if this EULA is deemed to be a modification of any previous arrangement or contract. If You do not agree to the terms of this EULA, DSC is unwilling to license the SOFTWARE PRODUCT to You, and You have no right to use it.

SOFTWARE PRODUCT LICENSE

The SOFTWARE PRODUCT is protected by copyright laws and international copyright treaties, as well as other intellectual property laws and treaties. The SOFTWARE PRODUCT is licensed, not sold.

- 1. GRANT OF LICENSE** This EULA grants You the following rights:
 - (a) Software Installation and Use - For each license You acquire, You may have only one copy of the SOFTWARE PRODUCT installed.
 - (b) Storage/Network Use - The SOFTWARE PRODUCT may not be installed, accessed, displayed, run, shared or used concurrently on or from different computers, including a workstation, terminal or other digital electronic device ("Device"). In other words, if You have several workstations, You will have to acquire a license for each workstation where the SOFTWARE will be used.
 - (c) Backup Copy - You may make back-up copies of the SOFTWARE PRODUCT, but You may only have one copy per license installed at any given time. You may use the back-up copy solely for archival purposes. Except as expressly provided in this EULA, You may not otherwise make copies of the SOFTWARE PRODUCT, including the printed materials accompanying the SOFTWARE.

2. DESCRIPTION OF OTHER RIGHTS AND LIMITATIONS

- (a) Limitations on Reverse Engineering, Decompilation and Disassembly - You may not reverse engineer, decompile, or disassemble the SOFTWARE PRODUCT, except and only to the extent that such activity is expressly permitted by applicable law notwithstanding this limitation. You may not make any changes or modifications to the Software, without the written permission of an officer of DSC. You may not remove any proprietary notices, marks or labels from the Software Product. You shall institute reasonable measures to ensure compliance with the terms and conditions of this EULA.
- (b) Separation of Components - The SOFTWARE PRODUCT is licensed as a single product. Its component parts may not be separated for use on more than one HARDWARE unit.
- (c) Single INTEGRATED PRODUCT - If You acquired this SOFTWARE with HARDWARE, then the SOFTWARE PRODUCT is licensed with the HARDWARE as a single integrated product. In this case, the SOFTWARE PRODUCT may only be used with the HARDWARE as set forth in this EULA.
- (d) Rental - You may not rent, lease or lend the SOFTWARE PRODUCT. You may not make it available to others or post it on a server or web site.
- (e) Software Product Transfer - You may transfer all of Your rights under this EULA only as part of a permanent sale or transfer of the HARDWARE, provided You retain no copies, You transfer all of the SOFTWARE PRODUCT (including all component parts, the media and printed materials, any upgrades and this EULA), and provided the recipient agrees to the terms of this EULA. If the SOFTWARE PRODUCT is an upgrade, any transfer must also include all prior versions of the SOFTWARE PRODUCT.
- (f) Termination - Without prejudice to any other rights, DSC may terminate this EULA if You fail to comply with the terms and conditions of this EULA. In such event, You must destroy all copies of the SOFTWARE PRODUCT and all of its component parts.
- (g) Trademarks - This EULA does not grant You any rights in connection with any trademarks or service marks of DSC or its suppliers.

3. COPYRIGHT - All title and intellectual property rights in and to the SOFTWARE PRODUCT (including but not limited to any images, photographs, and text incorporated into the SOFTWARE PRODUCT), the accompanying printed materials, and any copies of the SOFTWARE PRODUCT, are owned by DSC or its suppliers. You may not copy the printed materials accompanying the SOFTWARE PRODUCT. All title and intellectual property rights in and to the content which may be accessed through use of the SOFTWARE PRODUCT are the property of the respective content owner and may be protected by applicable copyright or other intellectual property laws and treaties. This EULA grants You no rights to use such content. All rights not expressly granted under this EULA are reserved by DSC and its suppliers.

4. EXPORT RESTRICTIONS - You agree that You will not export or re-export the SOFTWARE PRODUCT to any country, person, or entity subject to Canadian export restrictions.

5. CHOICE OF LAW - This Software License Agreement is governed by the laws of the Province of Ontario, Canada.

6. ARBITRATION - All disputes arising in connection with this Agreement shall be determined by final and binding arbitration in accordance with the Arbitration Act, and the parties agree to be bound by the arbitrator's decision. The place of arbitration shall be Toronto, Canada, and the language of the arbitration shall be English.

7. LIMITED WARRANTY

- (a) NO WARRANTY - DSC PROVIDES THE SOFTWARE "AS IS" WITHOUT WARRANTY. DSC DOES NOT WARRANT THAT THE SOFTWARE WILL MEET YOUR REQUIREMENTS OR THAT OPERATION OF THE SOFTWARE WILL BE UNINTERRUPTED OR ERROR-FREE.
- (b) CHANGES IN OPERATING ENVIRONMENT - DSC shall not be responsible for problems caused by changes in the operating characteristics of the HARDWARE, or for problems in the interaction of the SOFTWARE PRODUCT with non-DSC SOFTWARE or HARDWARE PRODUCTS.
- (c) LIMITATION OF LIABILITY; WARRANTY REFLECTS ALLOCATION OF RISK - IN ANY EVENT, IF ANY STATUTE IMPLIES WARRANTIES OR CONDITIONS NOT STATED IN THIS LICENSE AGREEMENT, DSC'S ENTIRE LIABILITY UNDER ANY PROVISION OF THIS LICENSE AGREEMENT SHALL BE LIMITED TO THE GREATER OF THE AMOUNT ACTUALLY PAID BY YOU TO LICENSE THE SOFTWARE PRODUCT AND FIVE CANADIAN DOLLARS (CAD\$5.00). BECAUSE SOME JURISDICTIONS DO NOT ALLOW THE EXCLUSION OR LIMITATION OF LIABILITY FOR CONSEQUENTIAL OR INCIDENTAL DAMAGES, THE ABOVE LIMITATION MAY NOT APPLY TO YOU.
- (d) DISCLAIMER OF WARRANTIES - THIS WARRANTY CONTAINS THE ENTIRE WARRANTY AND SHALL BE IN LIEU OF ANY AND ALL OTHER WARRANTIES, WHETHER EXPRESSED OR IMPLIED (INCLUDING ALL IMPLIED WARRANTIES OF MERCHANTABILITY OR FITNESS FOR A PARTICULAR PURPOSE) AND OF ALL OTHER OBLIGATIONS OR LIABILITIES ON THE PART OF DSC. DSC MAKES NO OTHER WARRANTIES. DSC NEITHER ASSUMES NOR AUTHORIZES ANY OTHER PERSON PURPORTING TO ACT ON ITS BEHALF TO MODIFY OR TO CHANGE THIS WARRANTY, NOR TO ASSUME FOR IT ANY OTHER WARRANTY OR LIABILITY CONCERNING THIS SOFTWARE PRODUCT.
- (e) EXCLUSIVE REMEDY AND LIMITATION OF WARRANTY - UNDER NO CIRCUMSTANCES SHALL DSC BE LIABLE FOR ANY SPECIAL, INCIDENTAL, CONSEQUENTIAL OR INDIRECT DAMAGES BASED UPON BREACH OF WARRANTY, BREACH OF CONTRACT, NEGLIGENCE, STRICT LIABILITY, OR ANY OTHER LEGAL THEORY. SUCH DAMAGES INCLUDE, BUT ARE NOT LIMITED TO, LOSS OF PROFITS, LOSS OF THE SOFTWARE PRODUCT OR ANY ASSOCIATED EQUIPMENT, COST OF CAPITAL, COST OF SUBSTITUTE OR REPLACEMENT EQUIPMENT, FACILITIES OR SERVICES, DOWN TIME, PURCHASERS TIME, THE CLAIMS OF THIRD PARTIES, INCLUDING CUSTOMERS, AND INJURY TO PROPERTY.

WARNING: DSC recommends that the entire system be completely tested on a regular basis. However, despite frequent testing, and due to, but not limited to, criminal tampering or electrical disruption, it is possible for this SOFTWARE PRODUCT to fail to perform as expected.

Always ensure you obtain the latest version of the User Guide. Updated versions of this User Guide are available by contacting your distributor.

New Zealand Telecom Network

The following is a list of warnings applicable when this equipment is connected to the New Zealand Telecom Network:

General Warning

The grant of a Telepermit for any item of terminal equipment indicates only that Telecom has accepted that the item complies with minimum conditions for connection to its network. It indicates no endorsement of the product by Telecom, nor does it provide any sort of warranty. Above all, it provides no assurance that any item will work correctly in all respects with another item of Telepermitted equipment of a different make or model, nor does it imply that any product is compatible with all of Telecom's network services.

Reverse Numbering (decadic signalling)

Decadic signalling should not be used as it is being progressively phased out of the network. DTMF dialling is 100% available and it should always be used.

Line Grabbing Equipment

This equipment is set up to carry out test calls at pre-determined times. Such test calls will interrupt any other calls that may be set up on the line at the same time. The timing set for such test calls should be discussed with the installer. The timing set for test calls from this equipment may be subject to 'drift'. If this proves to be inconvenient and your calls are interrupted, then the problem of timing should be discussed with the equipment installer. The matter should NOT be reported as a fault to Telecom Faults Service.

D.C. Line Feed to Other Devices

During dialling, this device unit does not provide DC voltage to the series port connection and this may cause loss of memory functions for the terminal devices (local telephone) connected to T-1, R-1.

General Operation (Ringer Sensitivity and Loading).

This device only responds to Distinctive Alert cadences DA1 and DA2

FCC COMPLIANCE STATEMENT

CAUTION: Changes or modifications not expressly approved by Digital Security Controls could void your authority to use this equipment.

This equipment has been tested and found to comply with the limits for a Class B digital device, pursuant to Part 15 of the FCC Rules. These limits are designed to provide reasonable protection against harmful interference in a residential installation. This equipment generates, uses and can radiate radio frequency energy and, if not installed and used in accordance with the instructions, may cause harmful interference to radio communications. However, there is no guarantee that interference will not occur in a particular installation. If this equipment does cause harmful interference to radio or television reception, which can be determined by turning the equipment off and on, the user is encouraged to try to correct the interference by one or more of the following measures:

- Re-orient the receiving antenna.
- Increase the separation between the equipment and receiver.
- Connect the equipment into an outlet on a circuit different from that to which the receiver is connected.
- Consult the dealer or experienced radio/television technician for help.

The user may find the following booklet prepared by the FCC useful: "How to Identify and Resolve Radio/Television Interference Problems". This booklet is available from the U.S. Government Printing Office, Washington D.C. 20402, Stock # 004-000-00345-4.

The keypads represented in this manual can be used with the following Control Units: PC1616, PC1832, PC1864.

IMPORTANT INFORMATION

This equipment complies with Part 68 of the FCC Rules and, if the product was approved July 23, 2001 or later, the requirements adopted by the ACTA. On the side of this equipment is a label that contains, among other information, a product identifier. If requested, this number must be provided to the Telephone Company.

PC1616 Product Identifier US: F53AL01BPC1614
PC1832 Product Identifier US: F53AL01BPC1832
PC1864 Product Identifier US: F53AL01BPC1864
USOC Jack: RJ-31X

Telephone Connection Requirements

A plug and jack used to connect this equipment to the premises wiring and telephone network must comply with the applicable FCC Part 68 rules and requirements adopted by the ACTA. A compliant telephone cord and modular plug is provided with this product. It is designed to be connected to a compatible modular jack that is also compliant. See installation instructions for details.

Ringer Equivalence Number (REN)

The REN is used to determine the number of devices that may be connected to a telephone line. Excessive RENs on a telephone line may result in the devices not ringing in response to an incoming call. In most but not all areas, the sum of RENs should not exceed five (5.0). To be certain of the number of devices that may be connected to a line, as determined by the total RENs, contact the local Telephone Company. For products approved after July 23, 2001, the REN for this product is part of the product identifier that has the format US: AAEEQ##TXXXX. The digits represented by ## are the REN without a decimal point (e.g., 03 is a REN of 0.3). For earlier products, the REN is separately shown on the label.

Incidence of Harm

If this equipment (PC1616, PC1832, PC1864) causes harm to the telephone network, the telephone company will notify you in advance that temporary discontinuance of service may be required. But if advance notice is not practical, the Telephone Company will notify the customer as soon as possible. Also, you will be advised of your right to file a complaint with the FCC if you believe it is necessary.

INDUSTRY CANADA STATEMENT

NOTICE: This Equipment meets the applicable Industry Canada Terminal Equipment Technical Specifications. This is confirmed by the registration number. The abbreviation, IC, before the registration number signifies that registration was performed based on a Declaration of Conformity indicating that Industry Canada technical specifications were met. It does not imply that that Industry Canada approved the equipment

NOTICE: The Ringer Equivalence Number (REN) for this terminal equipment is 0.1. The REN assigned to each terminal equipment provides an indication of the maximum number of terminals allowed to be connected to a telephone interface. The termination on an interface may consist of any combination of devices subject only to the requirement that the sum of the Ringer Equivalence Numbers of all devices does not exceed 5.

PC1864 Registration number IC: 160A-PC1864
PC1832 Registration number IC: 160A-PC1832
PC1616 Registration number IC: 160A-PC1614

Changes in Telephone Company Equipment or Facilities

The Telephone Company may make changes in its facilities, equipment, operations or procedures that could affect the operation of the equipment. If this happens the Telephone Company will provide advance notice in order for you to make necessary modifications to maintain uninterrupted service.

Equipment Maintenance Facility

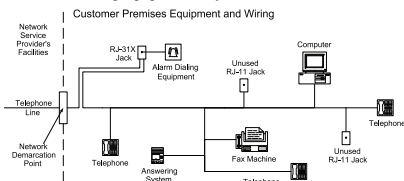
If trouble is experienced with this equipment (PC1616, PC1832, PC1864) for repair or warranty information, contact the facility indicated below. If the equipment is causing harm to the telephone network, the Telephone Company may request that you disconnect the equipment until the problem is solved. This equipment is of a type that is not intended to be repaired by the end user.

DSC c/o APL Logistics 757 Douglas Hill Rd, Lithia Springs, GA 30122

Additional Information

Connection to party line service is subject to state tariffs. Contact the state public utility commission, public service commission or corporation commission for information.

Alarm dialing equipment must be able to seize the telephone line and place a call in an emergency situation. It must be able to do this even if other equipment (telephone, answering system, computer modem, etc.) already has the telephone line in use. To do so, alarm dialing equipment must be connected to a properly installed RJ-31X jack that is electrically in series with and ahead of all other equipment attached to the same telephone line. Proper installation is depicted in the figure below. If you have any questions concerning these instructions, you should consult your telephone company or a qualified installer about installing the RJ-31X jack and alarm dialing equipment for you.



Hereby, DSC, declares that this device is in compliance with the essential requirements and other relevant provisions of Directive 1999/5/EC.
The complete R&TTE Declaration of Conformity can be found at http://www.dsc.com/listings_index.aspx

(CZ) DSC jako výrobce prohlašuje, že tento výrobek je v souladu se všemi relevantními požadavky směrnice 1999/5/EC.
(DA) DSC erklærer hermed at denne komponent overholder alle vigtige krav samt andre bestemmelser gældende i direktiv 1999/5/EC.
(DE) Hierbij verklaart DSC dat dit toestel in overeenstemming is met de eisen en bepalingen van richtlijn 1999/5/EC.
(EN) DSC vakuuttaa laitteen täyttävän direktiivin 1999/5/EC olennaiset vaatimukset.
(FR) Par la présente, DSC déclare que ce dispositif est conforme aux exigences essentielles et autres stipulations pertinentes de la Directive 1999/5/EC.
(GER) Hierdurch erklärt DSC, daß dieses Gerät den erforderlichen Bedingungen und Voraussetzungen der Richtlinie 1999/5/EC entspricht.
(GRE) Δια του παρόντος, η DSC, δηλώνει ότι αυτή η συσκευή είναι σύμφωνη με τις ουσιαστικές απαιτήσεις και με όλες τις άλλες σχετικές αναφορές της Οδηγίας 1999/5/EC.
(ITA) Con la presente la Digital Security Controls dichiara che questo prodotto è conforme ai requisiti essenziali ed altre disposizioni rilevanti relative alla Direttiva 1999/5/CE.
(NOR) DSC erklærer at denne enheten er i samsvar med de grunnleggende krav og øvrige relevante krav i direktiv 1999/5/EF.
(POL) DSC oświadcza, że urządzenie jest w zgodności z zasadniczymi wymaganiami oraz pozostałymi stosownymi postanowieniami Dyrektywy 1999/5/WE.
(POR) Por este meio, a DSC, declara que este equipamento está em conformidade com os requisitos essenciais e outras determinações relevantes da Directiva 1999/5/CE.
(SPA) Por la presente, DSC, declara que este equipo está en conformidad con los requisitos esenciales y otros requisitos relevantes de la Directiva 1999/5/CE.
(SWE) DSC bekräftar härmed att denna apparat uppfyller de väsentliga kraven och andra relevanta bestämmelser i Direktivet 1999/5/EC.



This product is in conformity with EMC Directive 2004/108/EC based on results using harmonized standards in accordance with article 10(5), R&TTE Directive 1999/5/EC based on following Annex III of the directive and LVD Directive 2006/95/EC based on results using harmonized standards.

This product meets the requirements of Class II, Grade 2 equipment as per EN 50131-1:2006 + A1:2009 Standard. This product is suitable for use in systems with the following notification options:

- A (use of two warning devices and internal dialer required),
- B (self powered warning device and internal dialer required),
- D (use of alternate IP/GSM communicator with encryption enabled required).

EN50131-1 Grade 2 Class II

The Model PC1864, PC1832, PC1616 Control Panel has been certified by Telefication according to EN50131-1:2006 + A1:2009, EN50131-3:2009, EN50131-6:2008 and EN50136-1:1997 for Grade 2, Class II, AT.S2.

The trademarks, logos, and service marks displayed on this document are registered in the United States [or other countries]. Any misuse of the trademarks is strictly prohibited and Tyco International Ltd. will aggressively enforce its intellectual property rights to the fullest extent of the law, including pursuit of criminal prosecution wherever necessary. All trademarks not owned by Tyco International Ltd. are the property of their respective owners, and are used with permission or allowed under applicable laws. Product offerings and specifications are subject to change without notice. Actual products may vary from photos. Not all products include all features. Availability varies by region; contact your sales representative.

DSC

A Tyco International Company

© 2013 Tyco International Ltd. and its Respective Companies.

All Rights Reserved • Toronto, Canada • www.dsc.com

Printed in Canada



29008772R001